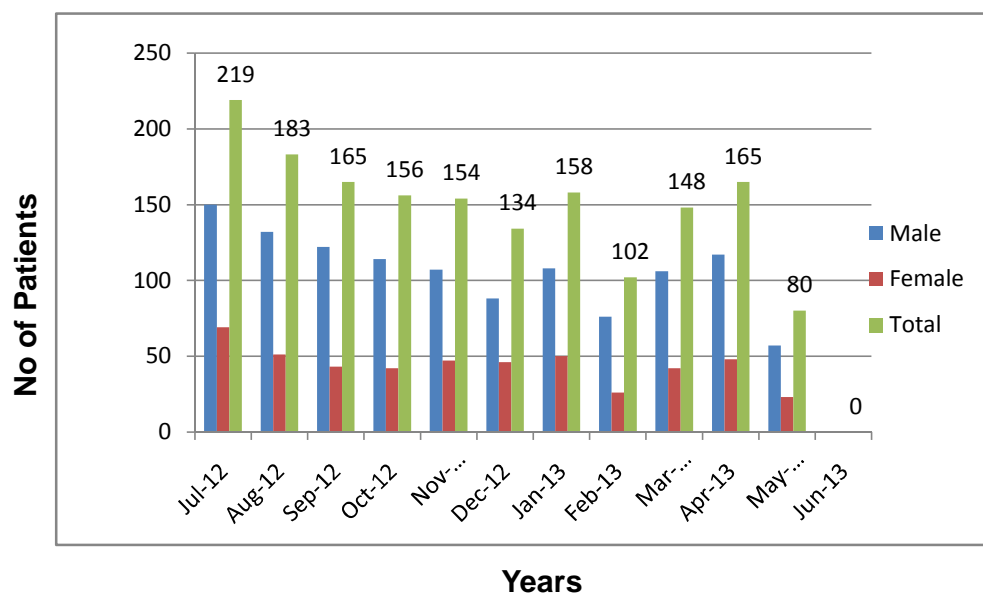


**Karachi Institute of Heart Diseases**  
**Summary of Angiography**  
**July 2012 To June 2013**

S.No	Month & Year	Male	Female	Total
1	Jul-12	150	69	219
2	Aug-12	132	51	183
3	Sep-12	122	43	165
4	Oct-12	114	42	156
5	Nov-12	107	47	154
6	Dec-12	88	46	134
7	Jan-13	108	50	158
8	Feb-13	76	26	102
9	Mar-13	106	42	148
10	Apr-13	117	48	165
11	May-13	57	23	80
12	Jun-13	0	0	0
<b>Total</b>		<b>1177</b>	<b>487</b>	<b>1664</b>

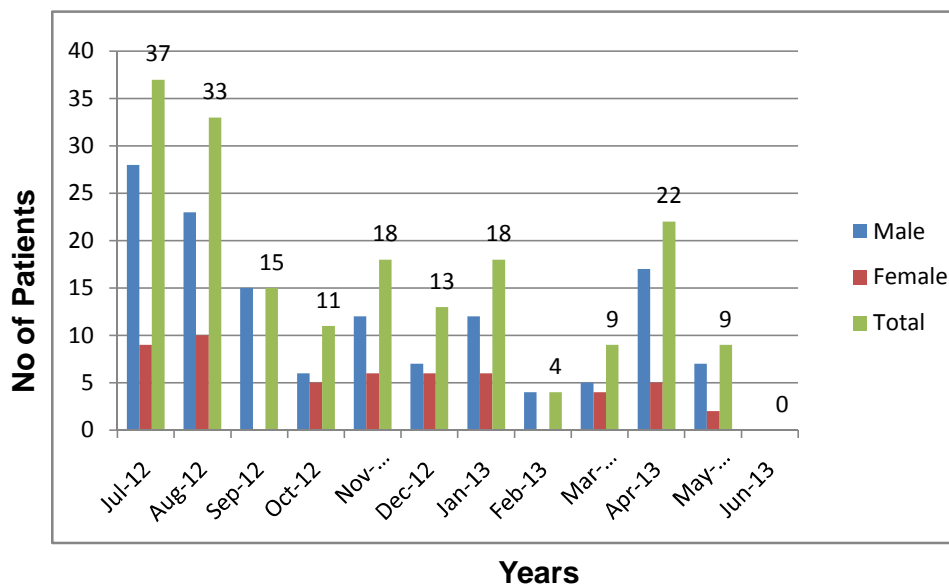
**Summary Of Angiography**  
**1 July 2012 - 30 June 2013**



**Karachi Institute of Heart Diseases**  
**Summary of Angioplasty**  
**July 2012 To June 2013**

S.No	Month & Year	Male	Female	Total
1	Jul-12	28	9	37
2	Aug-12	23	10	33
3	Sep-12	15	0	15
4	Oct-12	6	5	11
5	Nov-12	12	6	18
6	Dec-12	7	6	13
7	Jan-13	12	6	18
8	Feb-13	4	0	4
9	Mar-13	5	4	9
10	Apr-13	17	5	22
11	May-13	7	2	9
12	Jun-13	0	0	0
<b>Total</b>		<b>136</b>	<b>53</b>	<b>189</b>

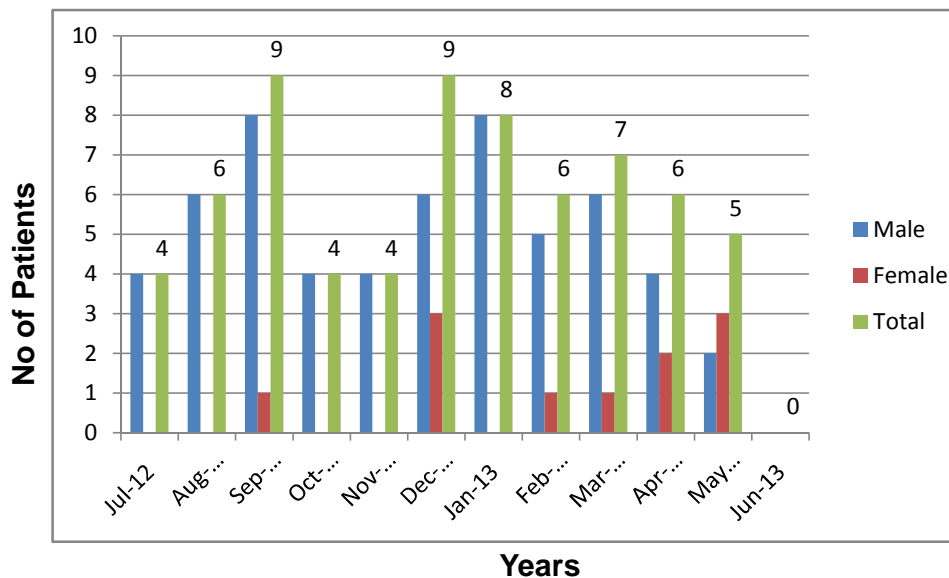
**Summary of Angioplasty**  
**1 July 2012 - 30 June 2013**



**Karachi Institute of Heart Diseases**  
**Summary of Bypass**  
**July 2012 To June 2013**

S.No	Month & Year	Male	Female	Total
1	Jul-12	4	0	4
2	Aug-12	6	0	6
3	Sep-12	8	1	9
4	Oct-12	4	0	4
5	Nov-12	4	0	4
6	Dec-12	6	3	9
7	Jan-13	8	0	8
8	Feb-13	5	1	6
9	Mar-13	6	1	7
10	Apr-13	4	2	6
11	May-13	2	3	5
12	Jun-13	0	0	0
<b>Total</b>		<b>57</b>	<b>11</b>	<b>68</b>

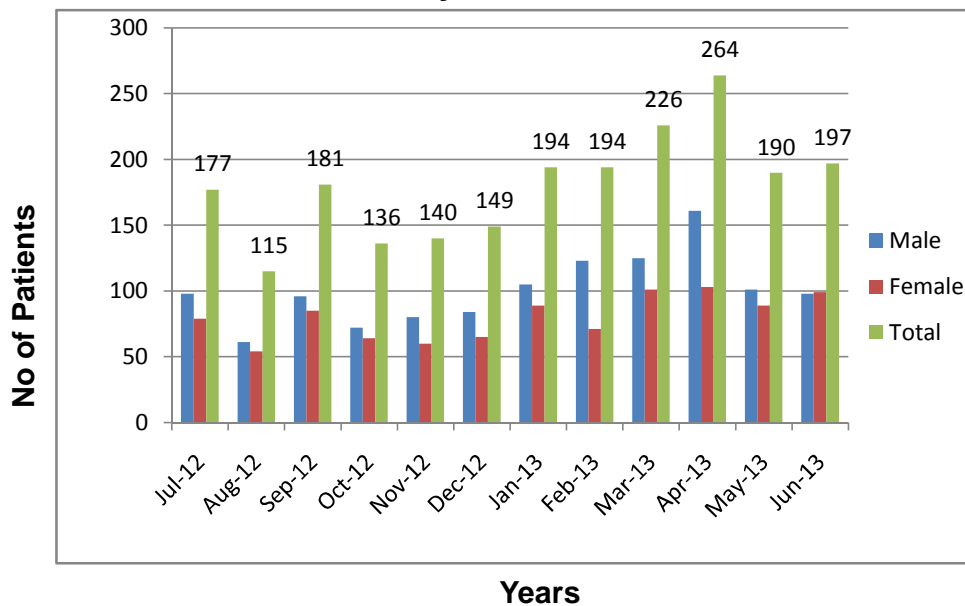
**Summary Of Bypass**  
**1 July 2012 - 30 June 2013**



**Karachi Institute of Heart Diseases**  
**Summary of Thallium**  
**July 2012 To June 2013**

S.No	Month & Year	Male	Female	Total
1	Jul-12	98	79	177
2	Aug-12	61	54	115
3	Sep-12	96	85	181
4	Oct-12	72	64	136
5	Nov-12	80	60	140
6	Dec-12	84	65	149
7	Jan-13	105	89	194
8	Feb-13	123	71	194
9	Mar-13	125	101	226
10	Apr-13	161	103	264
11	May-13	101	89	190
12	Jun-13	98	99	197
<b>Total</b>		<b>1204</b>	<b>959</b>	<b>2163</b>

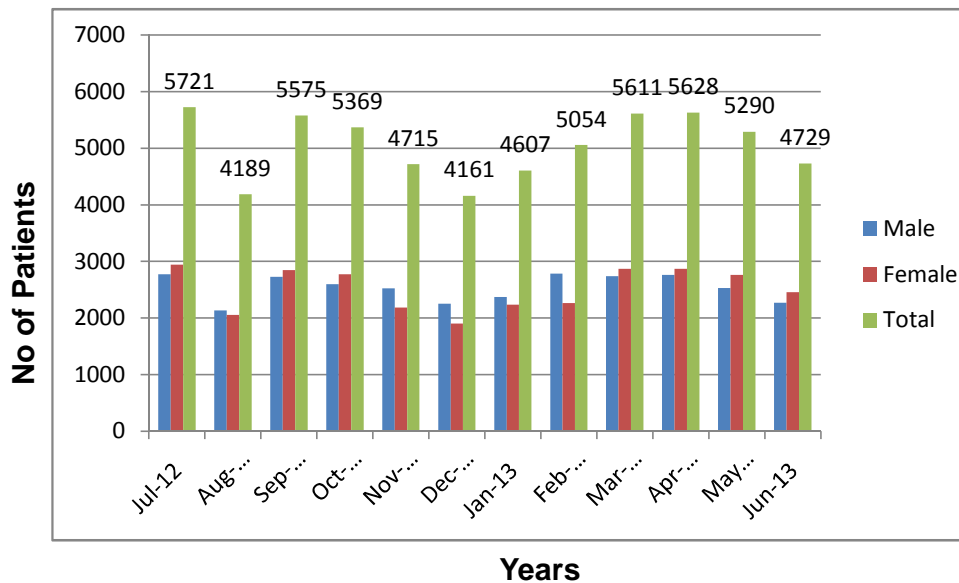
**Summary Of Thallium**  
**1 July 2012 - 30 June 2013**



**Karachi Institute of Heart Diseases**  
**Summary of OPD**  
**July 2012 To June 2013**

S.No	Month & Year	Male	Female	Total
1	Jul-12	2775	2946	5721
2	Aug-12	2133	2056	4189
3	Sep-12	2730	2845	5575
4	Oct-12	2597	2772	5369
5	Nov-12	2528	2187	4715
6	Dec-12	2255	1906	4161
7	Jan-13	2372	2235	4607
8	Feb-13	2788	2266	5054
9	Mar-13	2741	2870	5611
10	Apr-13	2760	2868	5628
11	May-13	2530	2760	5290
12	Jun-13	2273	2456	4729
<b>Total</b>		<b>30482</b>	<b>30167</b>	<b>60649</b>

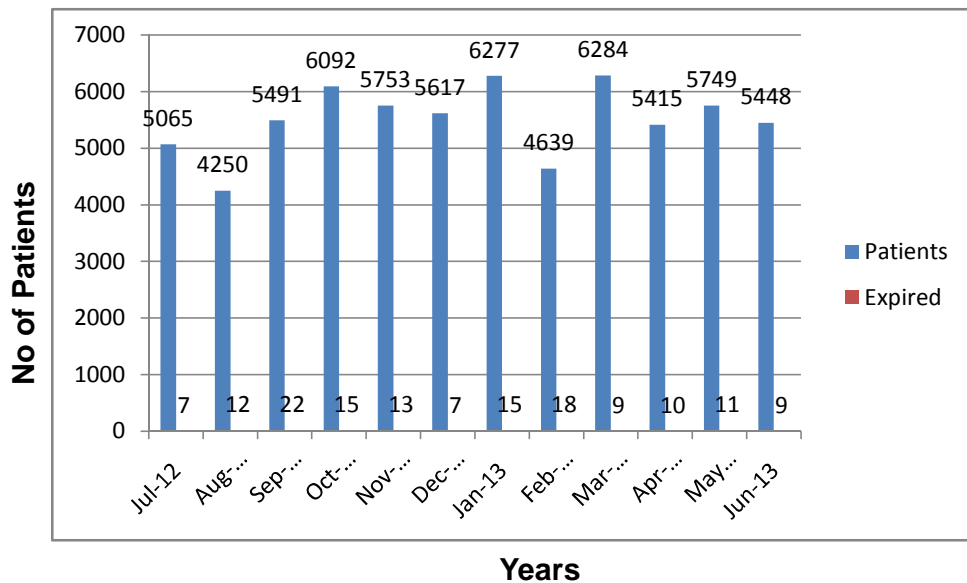
**Summary Of O.P.D**  
**1 July 2012 - 30 June 2013**



**Karachi Institute of Heart Diseases**  
**Summary of ER**  
**July 2012 To June 2013**

S.No	Month & Year	Patients	Expired	B.D	% of Exp
1	Jul-12	5065	7	48	0.138
2	Aug-12	4250	12	58	0.282
3	Sep-12	5491	22	39	0.4
4	Oct-12	6092	15	67	0.246
5	Nov-12	5753	13	51	0.225
6	Dec-12	5617	7	59	0.124
7	Jan-13	6277	15	74	0.2389
8	Feb-13	4639	18	69	0.388
9	Mar-13	6284	9	60	0.143
10	Apr-13	5415	10	62	0.1846
11	May-13	5749	11	34	0.1913
12	Jun-13	5448	9	63	0.165
<b>Total</b>		<b>66080</b>	<b>148</b>	<b>684</b>	<b>0.22</b>

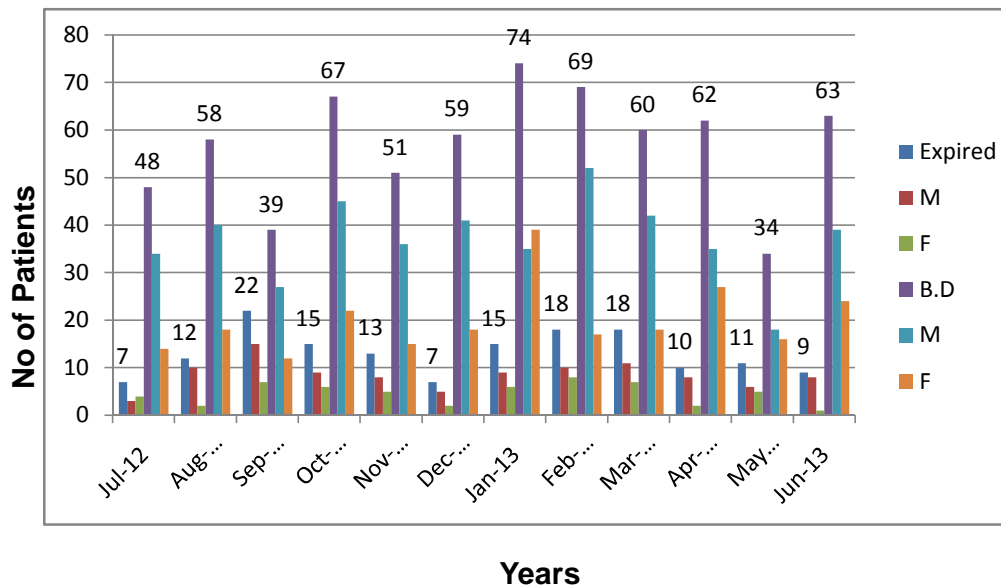
**Summary Of E.R**  
**1 July 2012 - 30 June 2013**



**Karachi Institute of Heart Diseases**  
**Summary of ER ( Expire & BD)**  
**July 2012 To June 2013**

S.No	Month & Year	Expired	M	F	B.D	M	F
1	Jul-12	7	3	4	48	34	14
2	Aug-12	12	10	2	58	40	18
3	Sep-12	22	15	7	39	27	12
4	Oct-12	15	9	6	67	45	22
5	Nov-12	13	8	5	51	36	15
6	Dec-12	7	5	2	59	41	18
7	Jan-13	15	9	6	74	35	39
8	Feb-13	18	10	8	69	52	17
9	Mar-13	18	11	7	60	42	18
10	Apr-13	10	8	2	62	35	27
11	May-13	11	6	5	34	18	16
12	Jun-13	9	8	1	63	39	24
<b>Total</b>		<b>157</b>	<b>102</b>	<b>55</b>	<b>684</b>	<b>444</b>	<b>240</b>

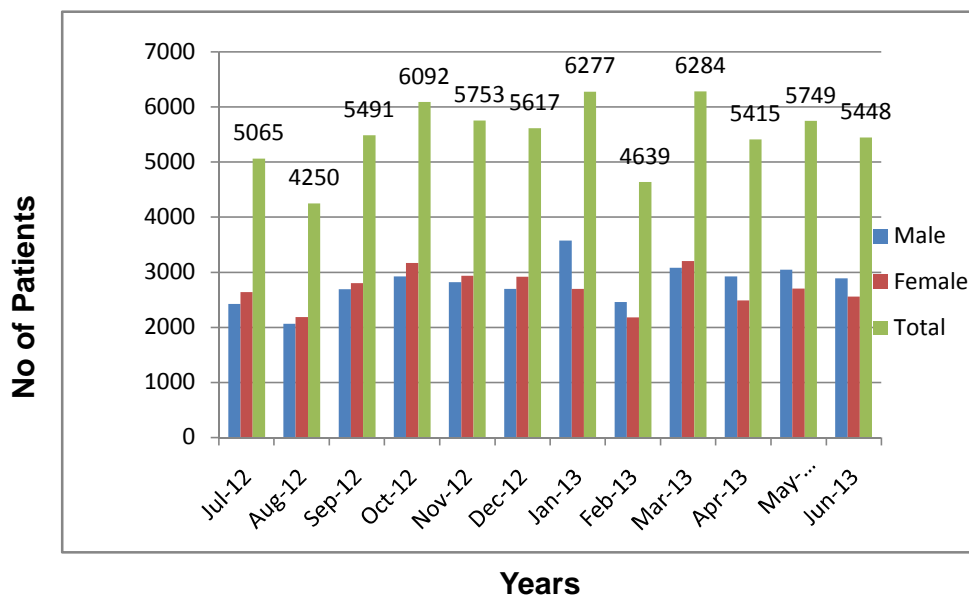
**Summary Of E.R(Expire & BD)**  
**1 July 2012 - 30 June 2013**



**Karachi Institute of Heart Diseases**  
**Summary of ER**  
**July 2012 To June 2013**

S.No	Month & Year	Male	Female	Total
1	Jul-12	2425	2640	5065
2	Aug-12	2065	2185	4250
3	Sep-12	2691	2800	5491
4	Oct-12	2924	3168	6092
5	Nov-12	2819	2934	5753
6	Dec-12	2696	2921	5617
7	Jan-13	3578	2699	6277
8	Feb-13	2458	2181	4639
9	Mar-13	3079	3205	6284
10	Apr-13	2924	2491	5415
11	May-13	3046	2703	5749
12	Jun-13	2887	2561	5448
<b>Total</b>		<b>33592</b>	<b>32488</b>	<b>66080</b>

**Summary Of E.R**  
**1 July 2012 - 30 June 2013**

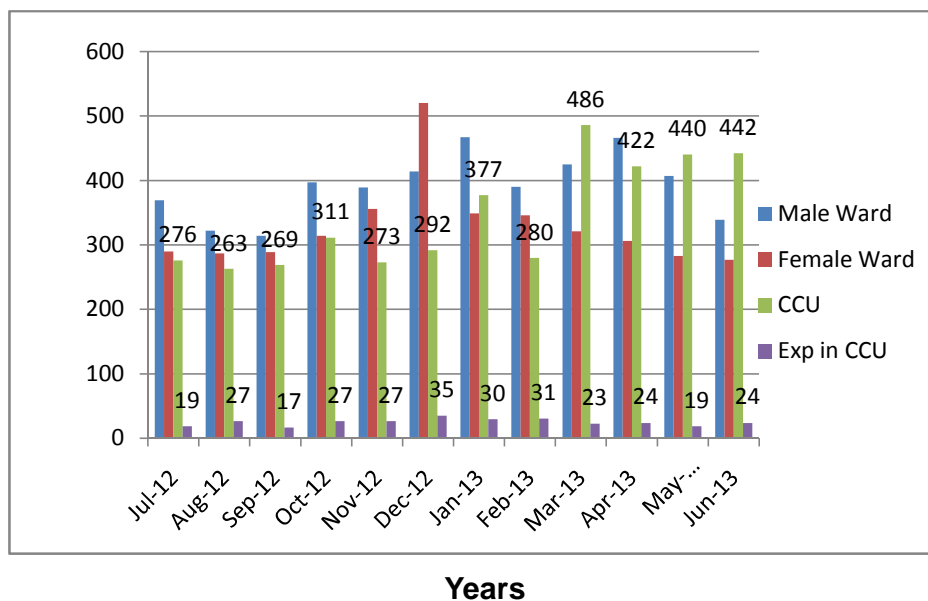




**Karachi Institute of Heart Diseases**  
**Summary of Admission**  
**July 2012 To June 2013**

S.No	Month & Year	Male Ward	Female Ward	CCU	Exp in CCU
1	Jul-12	369	290	276	19
2	Aug-12	322	287	263	27
3	Sep-12	314	289	269	17
4	Oct-12	397	314	311	27
5	Nov-12	389	356	273	27
6	Dec-12	414	520	292	35
7	Jan-13	467	349	377	30
8	Feb-13	390	346	280	31
9	Mar-13	425	321	486	23
10	Apr-13	466	306	422	24
11	May-13	407	283	440	19
12	Jun-13	339	277	442	24
<b>Total</b>		<b>4699</b>	<b>3938</b>	<b>4131</b>	<b>303</b>

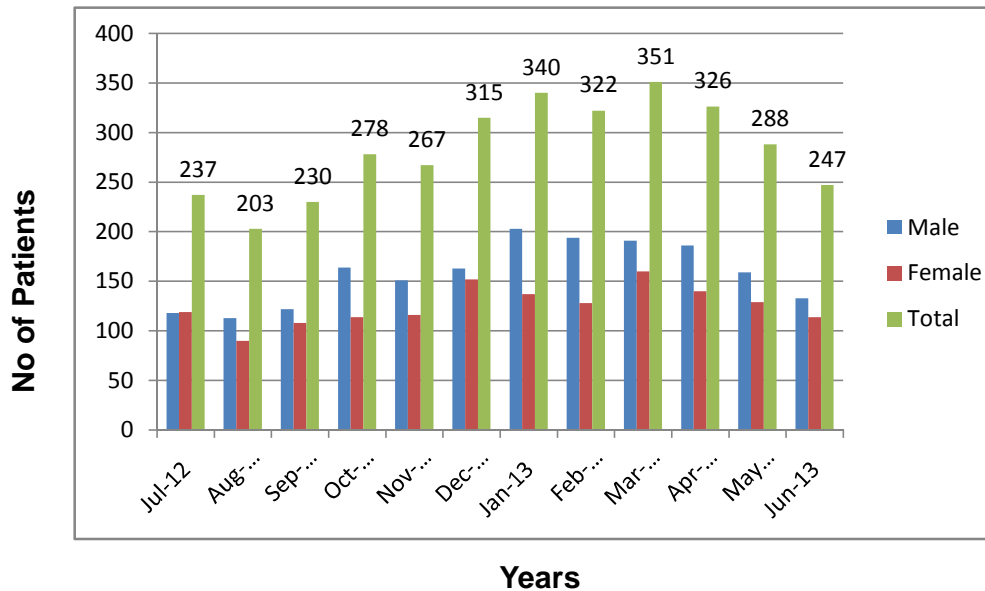
**Summary Of Admission**  
**1 July 2012 - 30 June 2013**



**Karachi Institute of Heart Diseases**  
**Summary of X-Ray**  
**July 2012 To June 2013**

S.No	Month & Year	Male	Female	Total
1	Jul-12	118	119	237
2	Aug-12	113	90	203
3	Sep-12	122	108	230
4	Oct-12	164	114	278
5	Nov-12	151	116	267
6	Dec-12	163	152	315
7	Jan-13	203	137	340
8	Feb-13	194	128	322
9	Mar-13	191	160	351
10	Apr-13	186	140	326
11	May-13	159	129	288
12	Jun-13	133	114	247
<b>Total</b>		<b>1897</b>	<b>1507</b>	<b>3404</b>

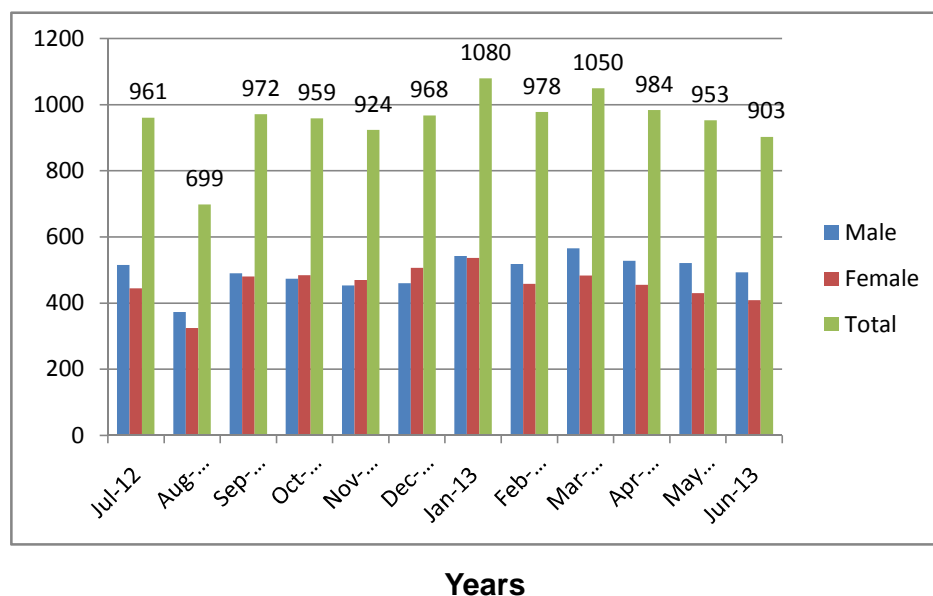
**Summary Of X-Rays**  
**1 July 2012 - 30 June 2013**



**Karachi Institute of Heart Diseases**  
**Summary of Echo**  
**July 2012 To June 2013**

S.No	Month & Year	Male	Female	Total
1	Jul-12	516	445	961
2	Aug-12	374	325	699
3	Sep-12	491	481	972
4	Oct-12	474	485	959
5	Nov-12	454	470	924
6	Dec-12	461	507	968
7	Jan-13	543	537	1080
8	Feb-13	519	459	978
9	Mar-13	566	484	1050
10	Apr-13	528	456	984
11	May-13	522	431	953
12	Jun-13	494	409	903
<b>Total</b>		<b>5942</b>	<b>5489</b>	<b>11431</b>

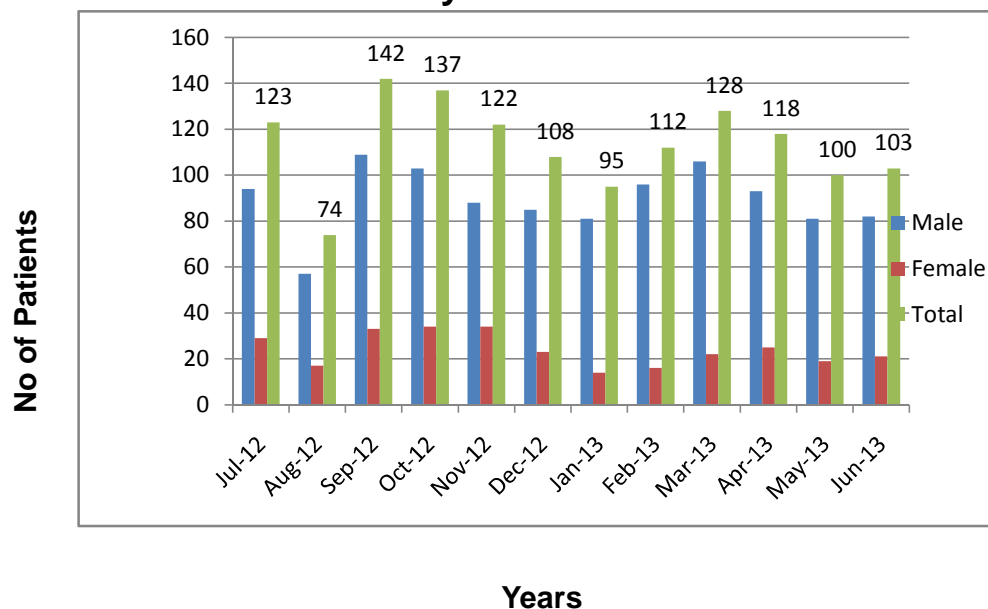
**Summary Of ECHO**  
**1 July 2012 - 30 June 2013**



**Karachi Institute of Heart Diseases**  
**Summary of ETT**  
**July 2012 To June 2013**

S.No	Month & Year	Male	Female	Total
1	Jul-12	94	29	123
2	Aug-12	57	17	74
3	Sep-12	109	33	142
4	Oct-12	103	34	137
5	Nov-12	88	34	122
6	Dec-12	85	23	108
7	Jan-13	81	14	95
8	Feb-13	96	16	112
9	Mar-13	106	22	128
10	Apr-13	93	25	118
11	May-13	81	19	100
12	Jun-13	82	21	103
<b>Total</b>		<b>1075</b>	<b>287</b>	<b>1362</b>

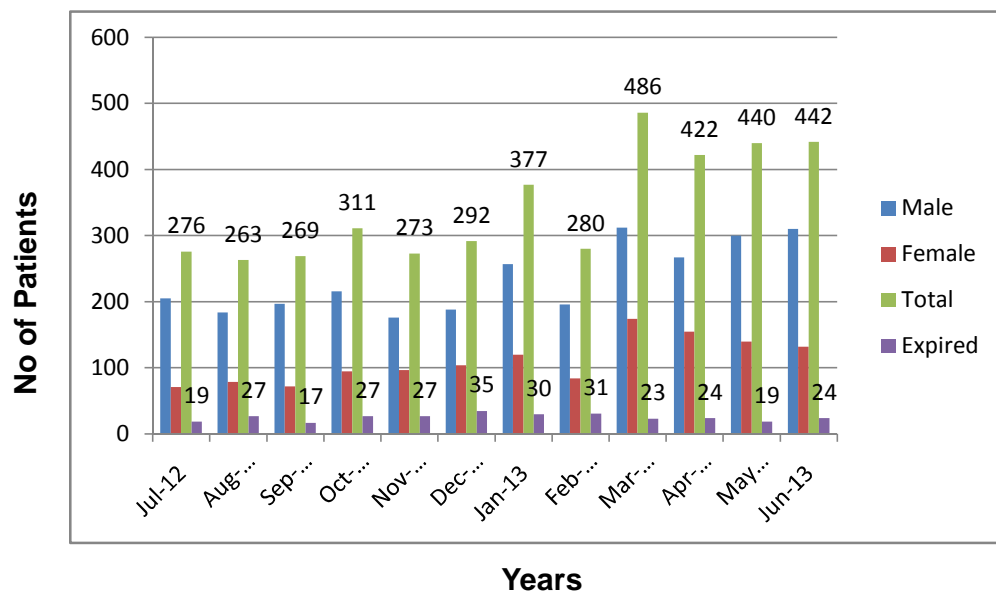
**Summary Of ETT**  
**1 July 2012 - 30 June 2013**



**Karachi Institute of Heart Diseases**  
**Summary of CCU**  
**July 2012 To June 2013**

S.No	Month & Year	Male	Female	Total	Expired	Male	Female
1	Jul-12	205	71	276	19	13	6
2	Aug-12	184	79	263	27	18	9
3	Sep-12	197	72	269	17	9	8
4	Oct-12	216	95	311	27	16	11
5	Nov-12	176	97	273	27	16	11
6	Dec-12	188	104	292	35	20	15
7	Jan-13	257	120	377	30	20	10
8	Feb-13	196	84	280	31	22	9
9	Mar-13	312	174	486	23	11	12
10	Apr-13	267	155	422	24	12	12
11	May-13	300	140	440	19	12	7
12	Jun-13	310	132	442	24	17	7
<b>Total</b>		<b>2808</b>	<b>1323</b>	<b>4131</b>	<b>303</b>	<b>186</b>	<b>117</b>

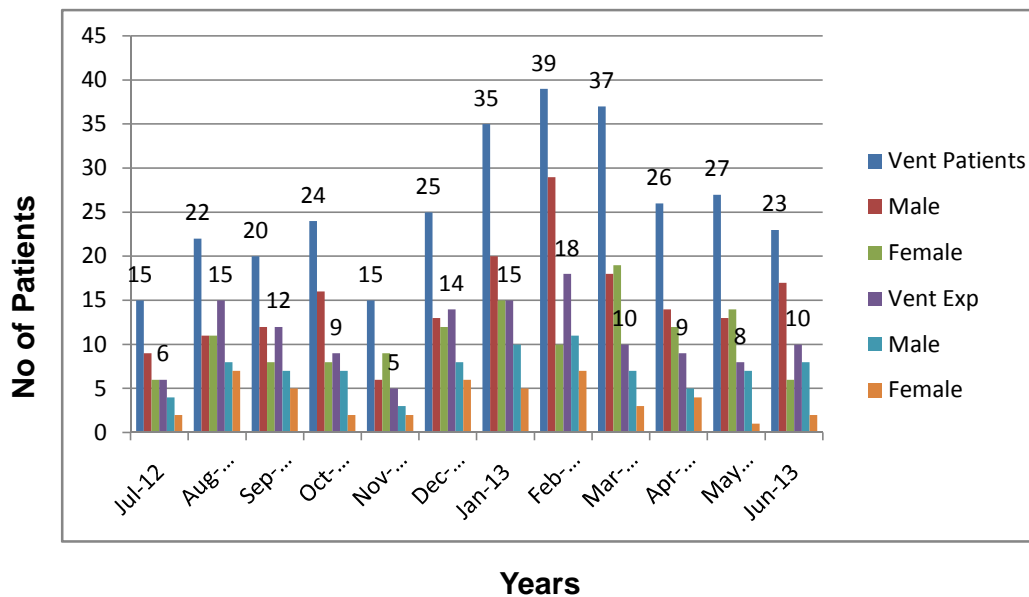
**Summary Of CCU**  
**1 July 2012 - 30 June 2013**



**Karachi Institute of Heart Diseases**  
**Summary of CCU**  
**July 2012 To June 2013**

S.No	Month & Year	Vent Patients	Male	Female	Vent Exp	Male	Female
1	Jul-12	15	9	6	6	4	2
2	Aug-12	22	11	11	15	8	7
3	Sep-12	20	12	8	12	7	5
4	Oct-12	24	16	8	9	7	2
5	Nov-12	15	6	9	5	3	2
6	Dec-12	25	13	12	14	8	6
7	Jan-13	35	20	15	15	10	5
8	Feb-13	39	29	10	18	11	7
9	Mar-13	37	18	19	10	7	3
10	Apr-13	26	14	12	9	5	4
11	May-13	27	13	14	8	7	1
12	Jun-13	23	17	6	10	8	2
<b>Total</b>		<b>308</b>	<b>178</b>	<b>130</b>	<b>131</b>	<b>85</b>	<b>46</b>

**Summary Of CCU**  
**1 July 2012 - 30 June 2013**





|



\_\_\_\_\_

\_\_\_\_\_

\_\_\_\_\_

\_\_\_\_\_

\_\_\_\_\_

|



|



|

|

|

|

\_\_\_\_\_

